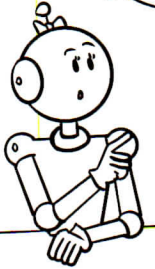


1 Calcule les produits.

Regarde bien  
l'exemple !



$$2 \times 3 = 6$$

$$2 \times 30 = 60$$

$$2 \times 300 = 600$$

$$4 \times 20 = \underline{\hspace{2cm}}$$

$$4 \times 30 = \underline{\hspace{2cm}}$$

$$3 \times 60 = \underline{\hspace{2cm}}$$

$$2 \times 40 = \underline{\hspace{2cm}}$$

$$5 \times 20 = \underline{\hspace{2cm}}$$

$$3 \times 30 = \underline{\hspace{2cm}}$$

2 Calcule les produits.

$$3 \times 200 = \underline{\hspace{2cm}}$$

$$6 \times 200 = \underline{\hspace{2cm}}$$

$$2 \times 400 = \underline{\hspace{2cm}}$$

$$3 \times 300 = \underline{\hspace{2cm}}$$

$$8 \times 200 = \underline{\hspace{2cm}}$$

$$6 \times 400 = \underline{\hspace{2cm}}$$

$$6 \times 20 = \underline{\hspace{2cm}}$$

$$8 \times 20 = \underline{\hspace{2cm}}$$

$$4 \times 300 = \underline{\hspace{2cm}}$$

3 Relie chaque multiplication au bon résultat.

$$5 \times 200$$

$$8 \times 300$$

$$7 \times 400$$

$$5 \times 40$$

$$9 \times 300$$

$$6 \times 40$$

2 800

1 000

2 700

240

200

2 400